



Somerset Academy Charter School at Silver Palms, Phase II

Miami, Florida



CIVICA, LLC – Architecture & Urban Design

Design team:

Rolando Llanes, RA, Principal-in-Charge;
Ivan Fajardo, Project Manager; Alejandro Diaz,
Julio Guillen, Tomasz Modzelewski,
Carlos Perez

Client:

Silver Palms Holdings of Homestead, LLC/
Academica Corporation; Kenneth Feria,
Principal

Capacity:

700

Space/student:

60 sq. ft.

Area:

41,700 sq. ft.

Total cost:

\$4.5 million

Cost/square foot:

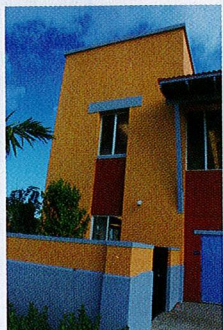
\$108

Completion:

August 2011

Photographer:

Rolando Llanes



Somerset Academy Charter School at Silver Palms is a 41,700-square-foot facility situated in Silver Palms, a 1,600-home residential community in Miami-Dade County, Fla., and developed by Lennar Homes. The school is the second phase of an educational campus intended to mitigate the student-station impact of the proposed development. Phase I opened in August 2007 and accommodates about 1,100 students. Phase II is situated one block to the west of the existing school and also is intended to mitigate the student-station needs of residents.

The two-story building is built on a 2.17-acre parcel and designed as part of the larger campus. The architectural character of the school is intended to harmonize with the existing school and the residential development, while maintaining the civic scale of a neighborhood school.

The school's program is organized in a linear manner with the library and administrative section toward the front, adjacent to the lunch courtyard. The main body of the building is composed of classrooms and culminates in a semicircular element that houses multipurpose classrooms. Large, broad loggias provide connectivity between classrooms, and along the east side help define the edge of a recreation area. 🌿