



DORAL ACADEMY, HIGH SCHOOL ANNEX DORAL, FLORIDA

**Civica, LLC - Architecture
& Urban Design**

Design team

Rolando Llanes, RA, Principal-in-Charge;
Julio Guillen, Project Manager; Ivan Fajardo,
Carlos Perez, Tomasz Modzelewski, Rudy
Castillo, Jose Valderrama, Alex Diaz

Client

Doral Academy, Inc.; Douglas Rodriguez,
Principal

Area	Total cost
33,000 sq. ft.	\$3,980,000

Cost/square foot	Capacity
\$120	893

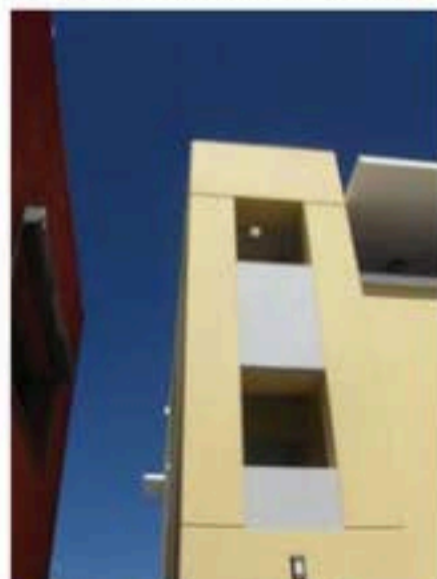
Completion	Photographer
August 2012	Rolando Llanes



Doral Academy is a middle/high charter school in Doral, Fla. The original high school and middle school are situated in a retrofitted healthcare facility and warehouse, respectively. Subsequent additions to the campus include a cafeteria, athletic fields and courts, and a three-story classroom annex that serves both middle and high school.

The new entrance to the high school is marked by an archway that identifies the school from the street and mediates an increase in scale from the one-story cafeteria to the west to the new, three-story classroom annex to the east.

The primary facade of the new classroom annex faces north and is composed of windows that increase in size as they rise. The



larger windows on the upper floor serve a dance studio and art lab. The south facade is screened by a deep circulation loggia that also provides access to the classrooms.

